



## HELICOPTER TRAINING



**ELITE**  
helicopter *evolution*

### Revolutionary Rotary Wing Simulator

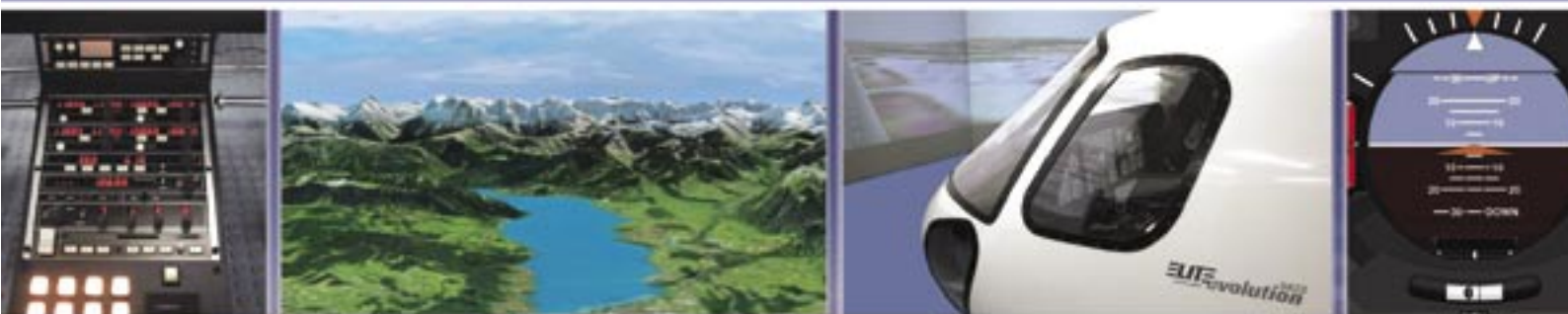
The all new **ELITE evolution** rotary wing flight training device is based on the popular Eurocopter AS350 helicopter and is the first step in establishing ELITE Simulation Solutions AG as a leading manufacturer of quality Helicopter Flight Training Devices.

### JAA, FAA & CASA approved

Meets all standards and performance criteria for qualification under JAA JAR-STD 3(H), CASA FSD2 Cat B STD and FAA training device requirements.

**Helicopter training now added to ELITE's already comprehensive range of training devices.**

## ELITE training systems: Cost effective and highly efficient...

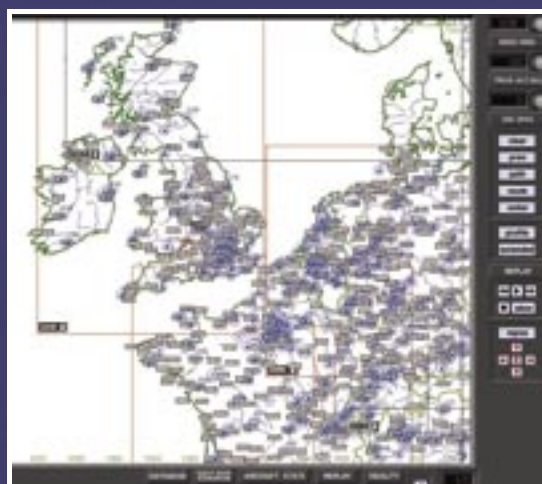


### The ELITE<sub>helicopter</sub> evolution Rotary Wing Synthetic Flight Trainer features:

- Dual flight controls
- Pilot / Co-Pilot set of specific instruments
- Full autopilot capability with flight director and navigation coupling to VOR & GPS
- IFR GPS to TSO C129 standard
- Full interactive instructor facilities
- Various different visual options available (optionally up to 220 degrees)
- Full size enclosed cockpit mockup based on AS350 (other models available on request, ie. Bell 206, AS355)
- Compact footprint (min. 4 x 4 m)

### optionally available:

- customer specific 3D modelled visual objects such as oil rigs and helipads
- additional GPS receivers
- EFIS upgrade (Bendix King EFS40)



The ELITE map page is a virtual "command center" which allows you to train and evaluate your flights with unparalleled precision.

Shoot virtually any IFR approach in the world, then evaluate your performance on ELITE's map screen as well as replay your flight with plan, profile, and extended profile views.



Full VFR functionality with the new visual scenery database. Visual cues include up to 15m digital elevation model with ground collision detection, helipad markings, oilrigs, buildings, fog, haze, ceiling and visibility, clouds and day to night transition.

To learn more about the new **ELITE<sub>helicopter</sub> evolution** Helicopter Sim and/or if you would like to receive our promotional Video CD call one of our representatives at the address below or send an e-mail to [info@flyelite.ch](mailto:info@flyelite.ch)

**ELITE Simulation Solutions AG**  
Im Schörli 1  
CH-8600 Dübendorf  
Switzerland  
Tel: +41-43-355-19-20  
Fax: +41-43-355-19-21

**ELITE<sup>®</sup>**  
ELITE SIMULATION SOLUTIONS

[www.elite-evolution.ch](http://www.elite-evolution.ch)