

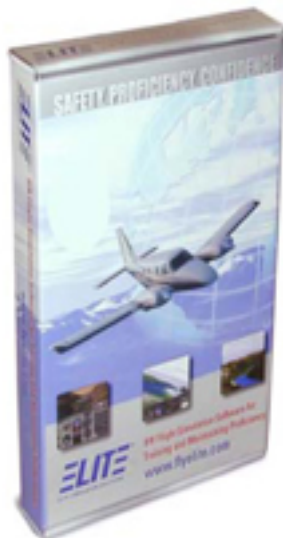


ELITE IPM (Interconnectivity Protocol Module) Installation Guide

IPM is an add-on product to ELITE that outputs flight data in formats (or protocols) common to most handheld GPS or Electronic Flight Bag (EFB) devices used for actual aircraft navigation. Connecting your devices to ELITE offers a new dimension in training and flight simulation.

Requirements: ELITE software with Interconnectivity Protocol Module (IPM)
Garmin Handheld GPS, Serial GPS Cable, available Serial Port
or USB Port with Serial to USB Adapter.

ELITE with IPM

Garmin Handheld GPS
(GPSMAP® 496 Shown Below)

Serial GPS Cable



Step 1: Attach the serial GPS cable to an available serial port on your PC or connect to the USB port with a serial to USB adapter.



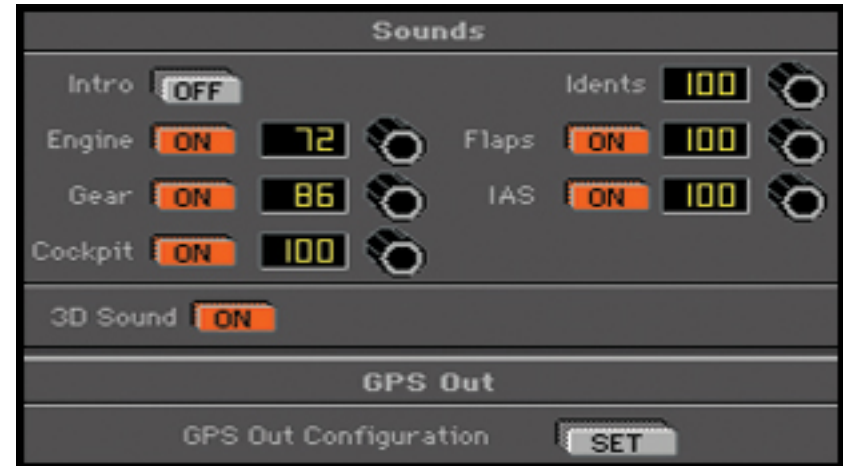
Step 2: Attach the serial GPS cable to Garmin Handheld GPS.
(GPSMAP® 496 Shown Below)



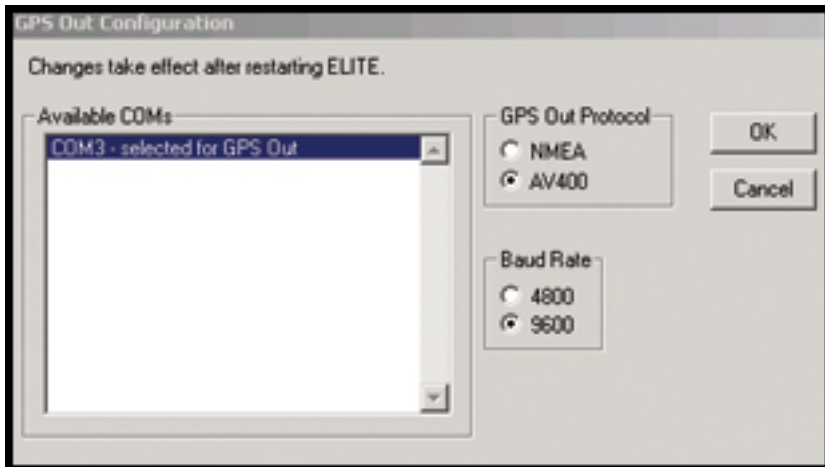
Step 3: Start the ELITE software program and select the Configuration Screen by entering **<ALT> + G** simultaneously or use your mouse.



Step 4: Select GPS Out Configuration **SET**.



Step 5: Select the correct COM port/speed protocol. Most cases for Garmin products is **AV400** for output protocol.



Step 6: Change Interface mode to **Aviation**.

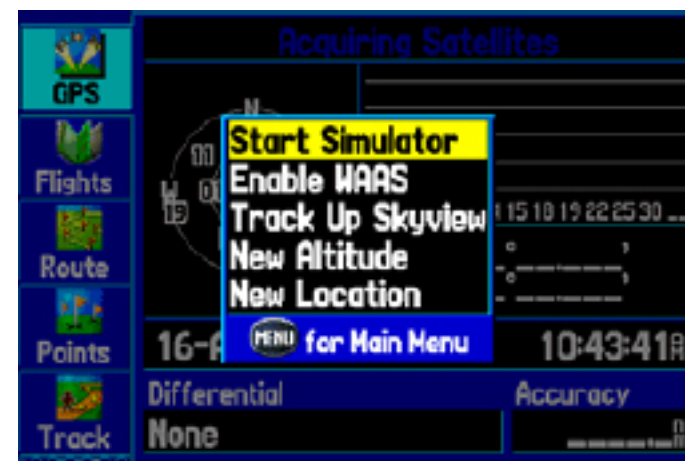


Start Simulator Mode

You can start simulator mode by using the GPS tab or the setup tab on the main menu.

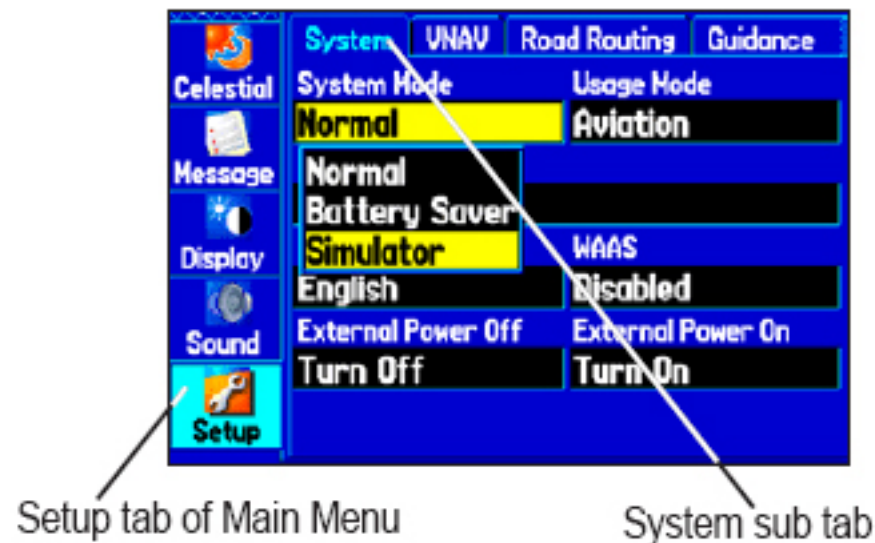
To start Simulator Mode using the GPS tab:

1. Press **MENU** twice to show the Main Menu.
2. Highlight **GPS** from the vertical menu.
3. Press **MENU** to open the GPS tab option menu.
4. Highlight Start Simulator, and Press **ENTER**.



To start Simulator Mode using the Setup tab:

1. Press **MENU** twice to show the Main Menu.
2. Highlight **SETUP** from the vertical menu.
3. Highlight the **SYSTEM** sub tab.
4. Select **SIMULATOR** from the System Mode field.



NOTE: Do not attempt to navigate using simulator mode, when the unit is set to simulator mode, the GPS receiver is turned off. Any satellite signal strength bars shown are only simulations and do not represent the strength of actual satellite signals.

Installation Complete

The aircraft should be positioned on the GPS moving map display identical to the position of the trainer.

