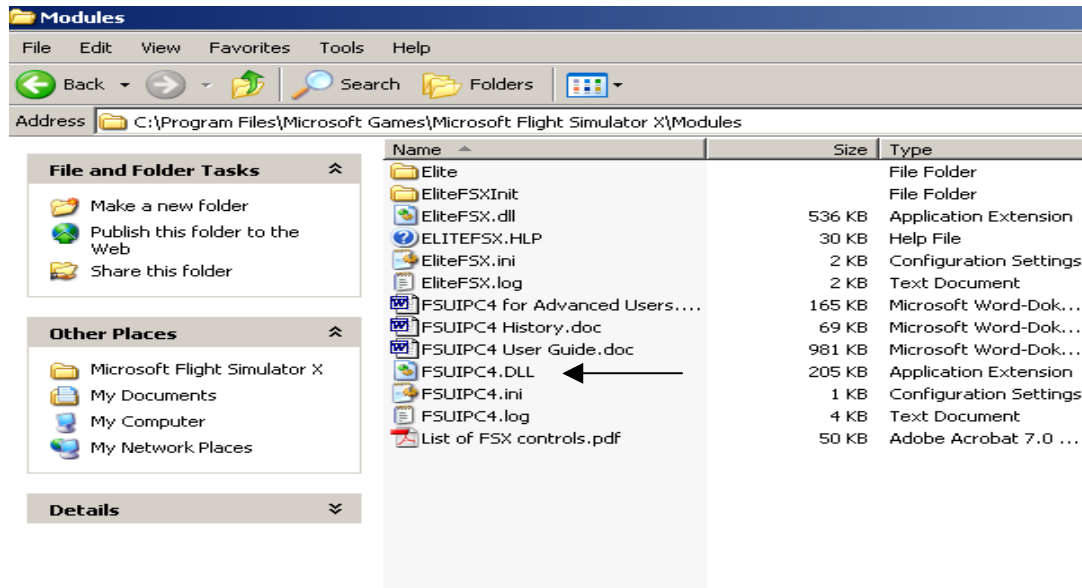


After a successful installation of your **Microsoft Flight Simulator X SP1**, you need to delete the fsuipc.dll file and re-install the **ELITEFS.EXE**

1. How to delete FSUIPC.DLL ?

Open, Microsoft Flight Simulator X Modules Directory and delete **FSUIPC4.DLL** file.



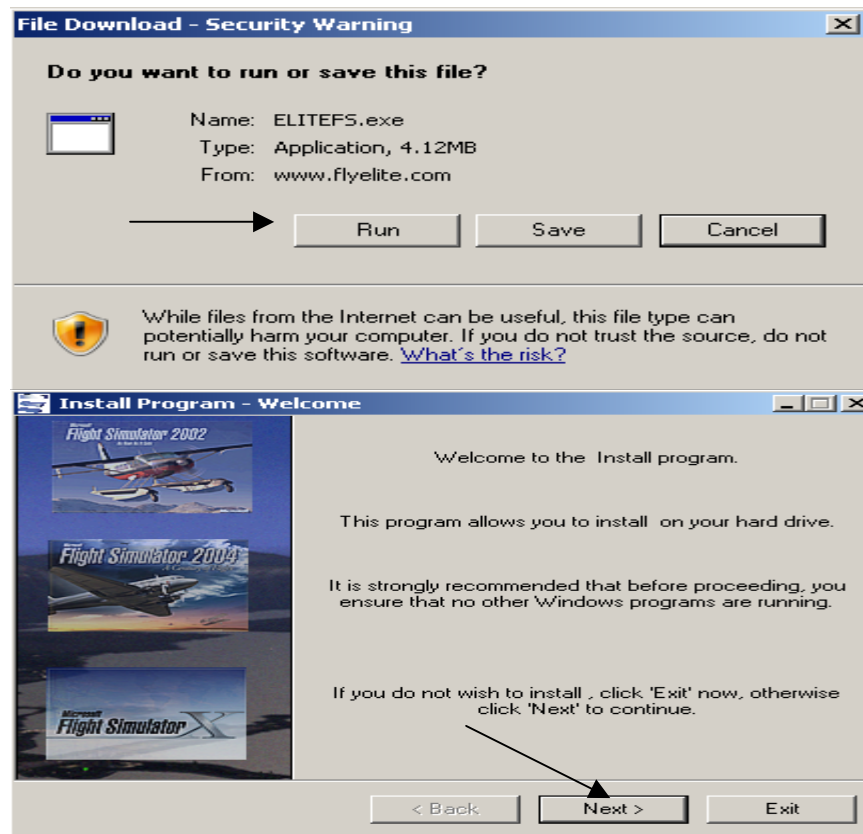
2. How to re-install the ELITEFS.EXE ?

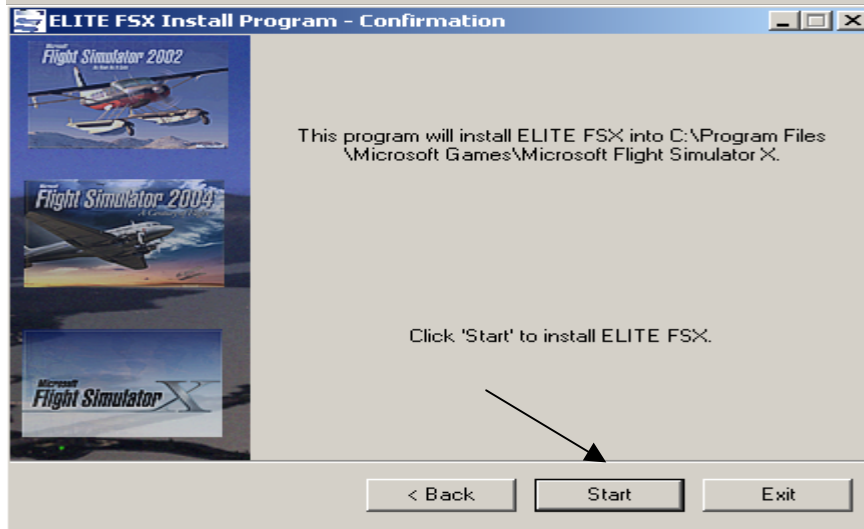
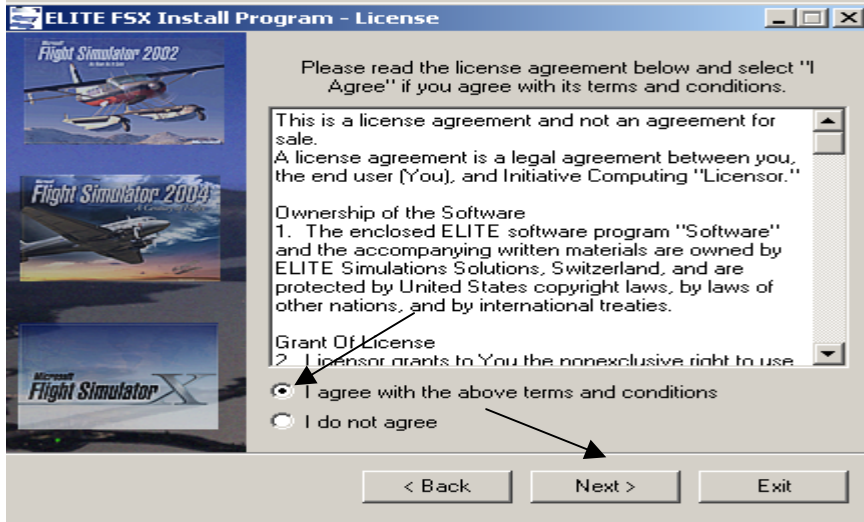
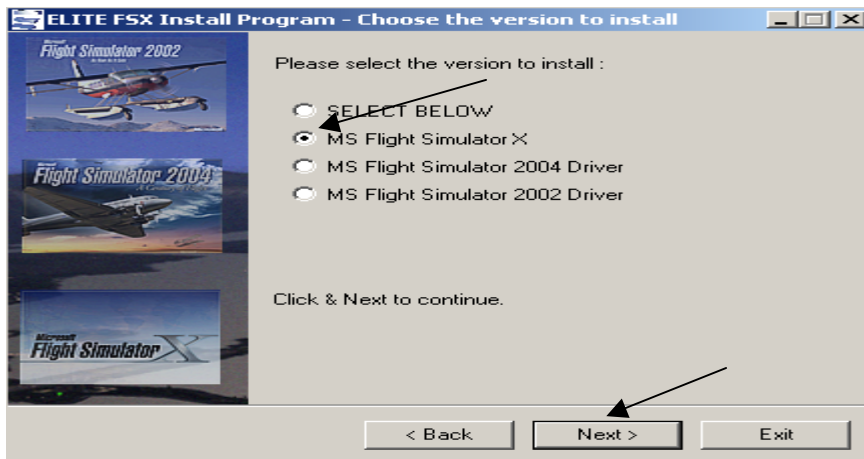
go to <http://www.flyelite.ch/en/support/patches.php> and run

MSFS 2002/2004/X drivers for use with ELITE Hardware

4.5 mb [ELITEFS.exe](#)

3. Follow the on-screen instructions





3. Re-Start FS-X and calibrate according to ELITEFS Manual.