



ELITE USB Hardware Installation Manual

Contents

Installing ELITE USB device driver under Windows 98/ME	2
Installing ELITE USB device driver under Windows 2000/XP	5
Installing ELITE USB devices under Macintosh OS 8/9	8
Connecting ELITE USB Hardware to Computer	9
Installing ELITE USB Support Software under Windows 98/ME/2000/XP	10
Installing ELITE USB Support Software under Macintosh OS 8/9	10
Installing ELITE USB Support Software for FS2002	11

Installing ELITE USB device driver under Windows 98/ME

This guide assumes that you are installing the drivers on to a clean system, i.e. one on which ELITE USB drivers have not been previously installed.

ELITE USB Hardware should ship with a complete set of drivers on CD-Rom. Users can also download them from <http://www.flyelite.ch> or <http://www.flyelite.com>. The downloaded drivers should be unzipped onto a floppy disk before proceeding with installation.

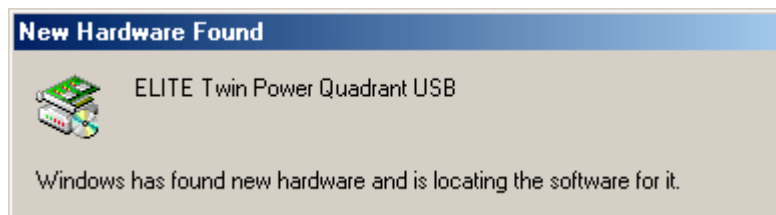
The screen shots are taken from a Windows ME installation. The installation on a Windows 98 system should be very similar.

Installation:

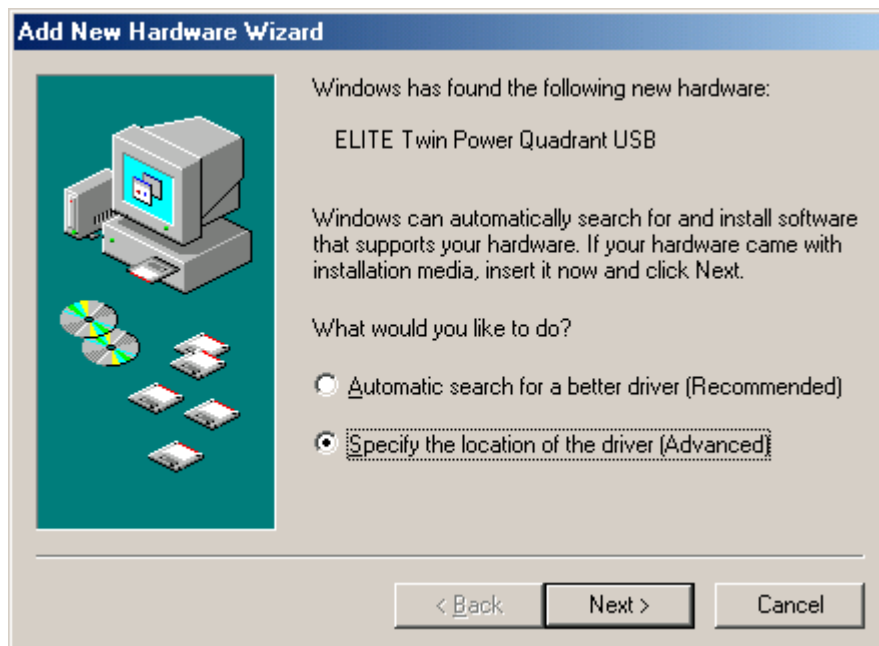
Insert the ELITE USB Driver CD-Rom in the CD-Rom drive of the computer. Quit out of the Intro of the CD-Rom.

Plug in your device. This should bring up a "New Hardware Found" window (Screen 1) followed by the Add New Hardware Wizard (Screen 2).

Screen 1

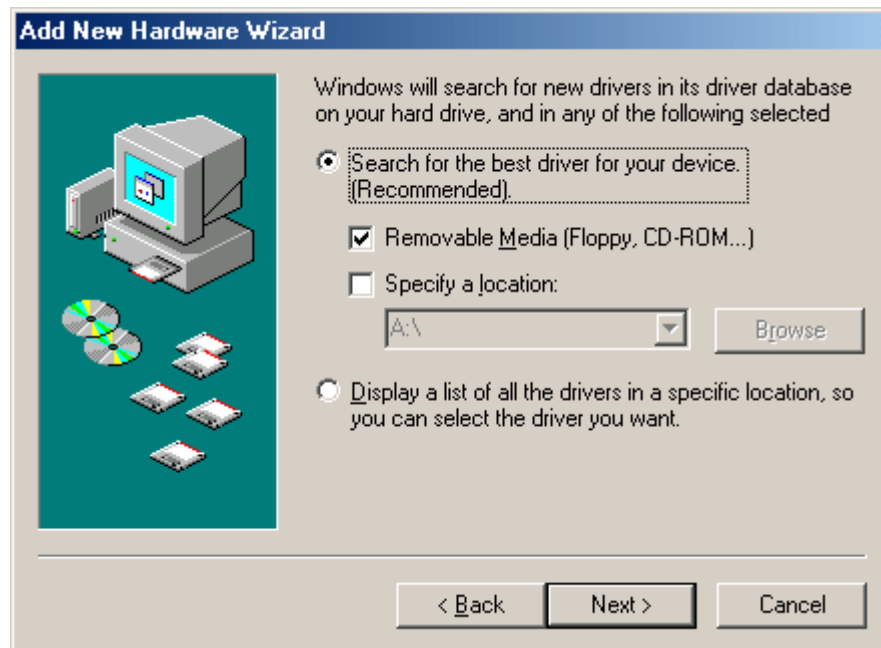


Screen 2



- Select 'Specify the location of the driver (Advanced)'
- Select Next.

Screen 3



- Select 'Search for the best driver for your device (Recommended)'
- Select 'Removable Media (Floppy, CD-ROM...)'.
- Select Next.

Screen 4



- Select Next.

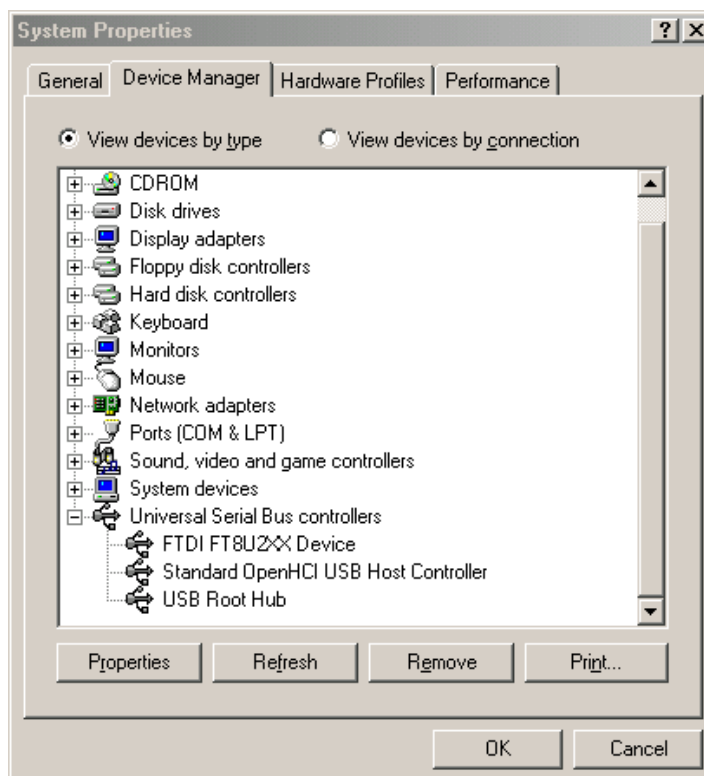
Screen 5



- Select Finish.

To confirm that the installation has completed successfully look under Device Manager of the System Properties screen (Screen 6). The device should have been installed as a FTDI FT8U2XX Device attached to Universal Serial Bus controllers.

Screen 6



Installing ELITE USB device driver under Windows 2000/XP

This guide assumes that you are installing the drivers on to a clean system, i.e. one on which ELITE USB drivers have not been previously installed.

ELITE USB Hardware should ship with a complete set of drivers on CD-Romz. Users can also download them from <http://www.flyelite.ch> or <http://www.flyelite.com>. The downloaded drivers should be unzipped onto a floppy disk before proceeding with installation.

The screen shots are taken from a Windows XP installation. The installation on a Windows 2000 system should be very similar.

Installation:

Insert the ELITE USB Driver CD-Rom in the CD-Rom drive of the computer. Quit out of the Intro of the CD-Rom.

Plug in your device. This should bring up a "New Hardware Found" window (Screen 1) followed by the Add New Hardware Wizard (Screen 2).

Screen 1

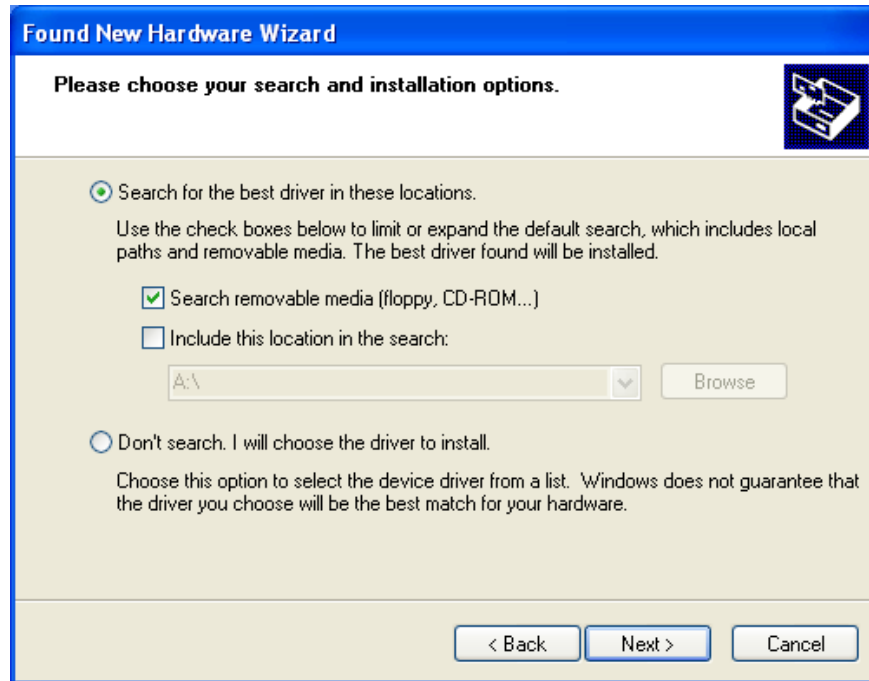


Screen 2



- Select "Install from a list or specific location (Advanced)"
- Select Next

Screen 3



- Select 'Search for the best driver in these locations.'
- Select 'Search removable media (floppy, CD-ROM...)'
- Select Next

Screen 4



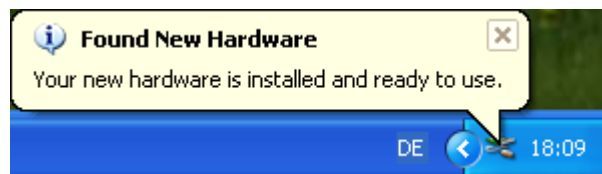
- Select 'Continue Anyway'

Screen 5



- Select Finish

Screen 6



The installation has completed successfully and the ELITE USB Hardware is ready to use.

Installing ELITE USB devices under Macintosh OS 8/9

ELITE USB Hardware should ship with a complete set of drivers on CD-Rom. Users can also download them from <http://www.flyelite.ch> or <http://www.flyelite.com>. The downloaded drivers should be uncompressed into a folder on the harddisk.

Before you start installing the driver, please don't plug your ELITE USB Hardware into the USB port of your computer or a USB hub connected to the computer.

Insert the ELITE USB Driver CD-Rom in the CD-Rom drive of the computer and follow the instructions of the installation guide program (Install ELITE USB Drivers).

Note: ELITE Pilot v7.0.4, ELITE PCATD v7.0.4 or ELITE Jet v7.0.4 or higher are required for installing ELITE USB devices and using ELITE USB Hardware.

Systemrequirements: Mac OS 8.6 - 9.2.2

Connecting ELITE USB Hardware to Computer

Connect each ELITE USB Hardware directly to the Computer or a USB hub, which is connected to the Computer, with the included USB cable.

ELITE AP3000 USB and ELITE ProPanel 2 USB need a separate power supply, which comes with these products. Connect the power supply into a power plug. All other ELITE USB Hardware units don't need additional electrical power.

Installing ELITE USB Support Software under Windows 98/ME/2000/XP

ELITE USB Hardware should ship with a complete set of ELITE support software on CD-Rom. Users can also download them from <http://www.flyelite.ch> or <http://www.flyelite.com>. The downloaded drivers should be unzipped into a directory on the harddisk.

Open the ELITEUSB directory, select the product you have and run the Setup.exe in that directory and follow the online instructions of the installer. When you have an ELITE Pilot or PCATD and an ELITE Jet, then you have to run the installer for ELITE Pilot/PCATD in the Pilot directory and the installer for ELITE Jet in the Jet directory.

Note: ELITE Pilot v7.0.4, ELITE PCATD v7.0.4 or ELITE Jet v7.0.4 or higher are required for installing ELITE USB devices and using ELITE USB Hardware.

Installing ELITE USB Support Software under Macintosh OS 8/9

ELITE USB Hardware should ship with a complete set of ELITE support software on floppy disk. Users can also download them from <http://www.flyelite.ch> or <http://www.flyelite.com>. The downloaded drivers should be uncompressed into a folder on the harddisk.

Open the ELITE USB Support Software folder. Choose the folder of your ELITE product and run the installer program in the folder and follow the online instructions of the installer. When you have an ELITE Pilot or PCATD and an ELITE Jet, then you have to run the installer for ELITE Pilot/PCATD and the installer for ELITE Jet.

Note: ELITE Pilot v7.0.4, ELITE PCATD v7.0.4 or ELITE Jet v7.0.4 or higher are required for installing ELITE USB devices and using ELITE USB Hardware.

Systemrequirements: Mac OS 8.6 - 9.2.2

Installing ELITE USB Support Software for FS2002

ELITE USB Hardware should ship with a complete set of ELITE support software on CD-Rom. Users can also download them from <http://www.flyelite.ch/flightsim> or <http://www.flyelite.com/flightsim>. The downloaded drivers should be unzipped into a directory on the harddisk.

Open the FS02USB directory. Run the fsusb.exe in the directory and follow the online instructions of the installer.

Note: You have to install the 'ELITE Hardware Support for FS2002' before installing the ELITE USB Support Software for FS2002'.